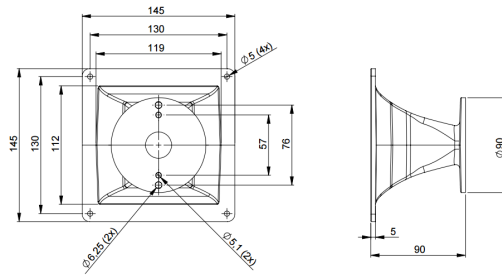


ME20

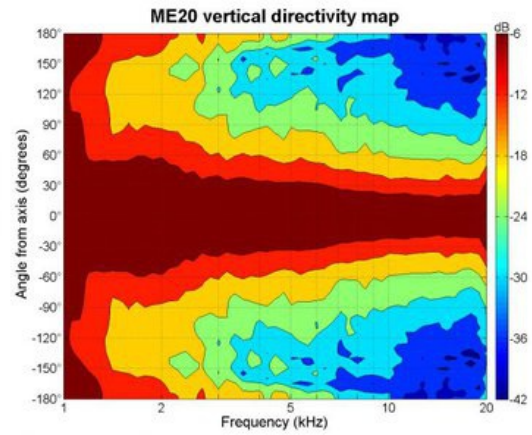
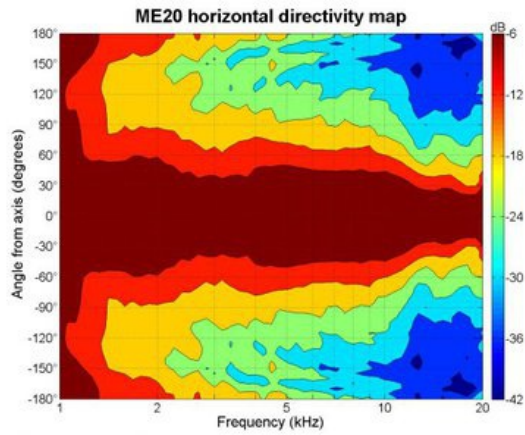
0Ω

Horns - 1.0 Inches

- 1" throat entry
- 90° x 60° nominal coverage
- Exponential flare
- Excellent loading down to 1.5 kHz

ME20

Horns- 1.0 Inches



SPECIFICATIONS¹

Throat Diameter	25 mm (1.0 in)
Nominal Coverage Horizontal	90 °
Nominal Coverage Vertical	60 °
Cutoff Frequency	1.5 kHz
Material	Cast Aluminium
Dimensions	145x145x90 mm (5.7x5.7x3.6 in)

MOUNTING AND SHIPPING INFO

Baffle Cutout Dimension	118x113 mm (4.6x4.4 in)
Net Weight	0.45 kg (1.0 lb)
Shipping Units	20
Shipping Weight	12.0 kg (26.4 lb)
Shipping Box	540x350x390 mm (21.2x13.8x15.3 in)

1. Horn mounted on B&C DE 500 compression driver.